

ALL NEW
OUTLANDER



THE LEGEND IN A NEW AVATAR

**NEW FEATURES &
ATTRACTIVE
PRICE**



WORLD STANDARD PERFORMANCE AND STYLE



LED Front Fog Lamps



Advanced
CVT Technology



LED Head Lamp



Electronic
Parking Brake



2.4 lit MIVEC Engine



Keyless Operation
System with
Push Button Start

BEST IN CLASS LUXURY AND COMFORT



Genuine Leather Black Interior

CLASS LEADING SAFETY



7 SRS AIRBAGS

ABS WITH EBD

Passengers and cargo without EBD



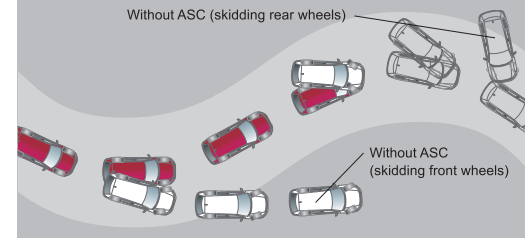
Passengers and cargo with EBD



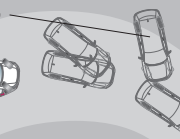
Driver only with EBD



ACTIVE STABILITY CONTROL (ASC)



Without ASC (skidding rear wheels)

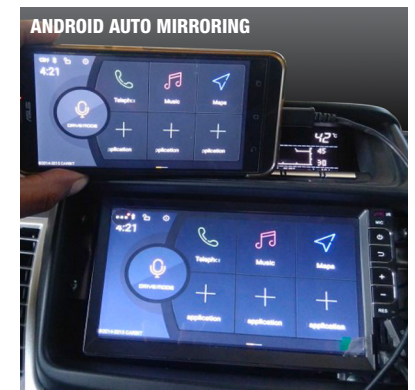


Without ASC (skidding front wheels)

NEW FEATURE



BLUETOOTH 7" AUDIO SYSTEM



ANDROID AUTO MIRRORING



Anti Trapping
Electric Sunroof



Rockford Fosgate
Premium Sound System



Rain Sensing Wiper

DIMENSIONS & WEIGHT	OUTLANDER SPECIFICATION
Overall (LxWxH)	4695mm X 1810mm X 1710mm
Wheelbase	2670mm
Ground Clearance (Unladen)	190mm
Minimum Turning Radius	5.3m
Seating Capacity	7
Max. Kerb Weight	1602Kg
Gross Weight	2210Kg
Fuel Tank Capacity	60Lts
ENGINE	
Type	2.4L - DOHC - Mitsubishi Innovative Valve Electronic Control System (MIVEC)
Valve train	16 Valve DOHC
Displacement	2360CC
Fuel supply system	Electronically Controlled Injection
Max. Engine Output, KW (PS) @ rpm	123 (167)/6000
Max. Torque, Nm (Kg-m) @ rpm	222 (22.6)/4100
CHASSIS & TRANSMISSION	
Transmission	Continuously Variable Transmission (CVT) with paddle shifters
Drive Type	Multi Select 4WD (Electronically controlled on demand 4WD ((4WD AUTO / 4WD ECO / 4WD LOCK))
Brake Front / Rear	Front : 16 inch ventilated disc brake / Rear : 16 inch solid brake disc
Parking Brake	Electric Parking Brake
Suspension Front	MacPherson strut with coil springs and stabilizer bar
Suspension Rear	Multi link with coil springs and stabilizer bar
Wheels & Tyre	16"x 6.5J alloy wheel with ornament + 215/70 R16 - 100H
COMFORT & CONVENIENCE	Dual Zone Fully automatic air conditioner I AC air filter I Keyless operation with push start button I Electric Parking Brake with auto hold function I Power tilt and sliding sunroof with anti-trapping function I Rain sensing wiper I Central door locking system I Power window driver's auto (up-down) function I Electronic power steering
SAFETY & SECURITY	7 Air bags (Driver / Passenger / Side-2 / Curtain-2 / Knee-1) I ABS + EBD I Active Stability Control (ASC) I Hill Start Assist(HSA) I Auto Head lamps I Immobilizer I Security alarm system I Brake assist system I Child proof I Front & Rear impact bar I RISE body
EXTERIOR FEATURES	LAMP: LED head lamp I Head lamp auto leveling I Auto light control I Front fog lamp (LED) with fog lamp bezel I LED D.R.L I Rear combination lamp LED I High mount stop lamp

INTERIOR FEATURES	WIPER & WASHER: Variable intermittent windshield wiper & washer Rain sensor Rear intermittent wiper & washer Headlamp washer
	GLASS: Laminated green windshield glass Tempered green front door glass Tempered green glass (rear & back door) with hot wire (back door) quarter window glass
	DOOR MIRROR & DOOR HANDLE: Electric foldable door mirror (body colour) with turn lamp (clear) Heated door mirror Door outer handle (body colour)
	BODY: Front bumper (body colour) Rear bumper (body colour (center : silver)) Step plate (rear bumper) License plate garnish Radiator grill Roof moulding (black) Roof rail Side door garnish (body colour)
	AUDIO SYSTEM: 7" Bluetooth Android Player, Navigation System, CAN bus enabled, Android Auto (mirroring) Rockford acoustic design premium sound system (tweeter x2, Speaker x4, woofer x1, 710W Amplifier x1, Shark fin antenna Center display Rear view system USB port
	SEATS 1ST ROW: Leather seat Flat seat Power adjustment driver seat - Slide / Reclining / Driver height adjuster Passenger: Slide / Reclining Seat heater Seat back pocket Adjustable type (up-down) headrest x2 3-point seatbelt with ELR x2 Seatbelt pretensioner Adjustable seatbelt anchor
	2ND ROW: 60:40 split foldable & tumble Reclining adjuster Center armrest with cup holder Adjustable type (up-down) headrest x3 3-point seatbelt with ELR x3 Attachment for ISO-FIX x2 Tether anchor x2
	3RD ROW: Removable type Folded / dropped / reclining Adjustable type headrest x2 3-point seatbelt with ELR x2
	STEERING: Electronic Power steering Rack & Pinion type 4-spoke leather steering Steering switch (Cruise control / Audio) Collapsible steering column Tilt steering
	CLUSTER: Combination meter with high contrast (Rheostat) Tachometer Digital Trip meter Digital Fuel and Temperature Indicator
	SHIFT KNOB: Leather gear shift knob
	LAMP: Room lamp with map lamp Door courtesy lamp Front foot lamp



www.mitsubishi-motors.co.in



PajeroSportIndia



MitsubishiIndia



mitsubishi-india



MitsubishiIndia



MitsubishiIndia

Note: Vehicle pictured and specifications detailed in this brochure may vary with the actuals. HMFL reserves the right to alter any details of specifications and equipments without notice.
All title, ownership rights and intellectual property rights in and relating to this publication material are owned by HMFL.

Mitsubishi vehicles are assembled in India by Hmfl under the license and Technical Assistance by Mitsubishi Motors Corporation